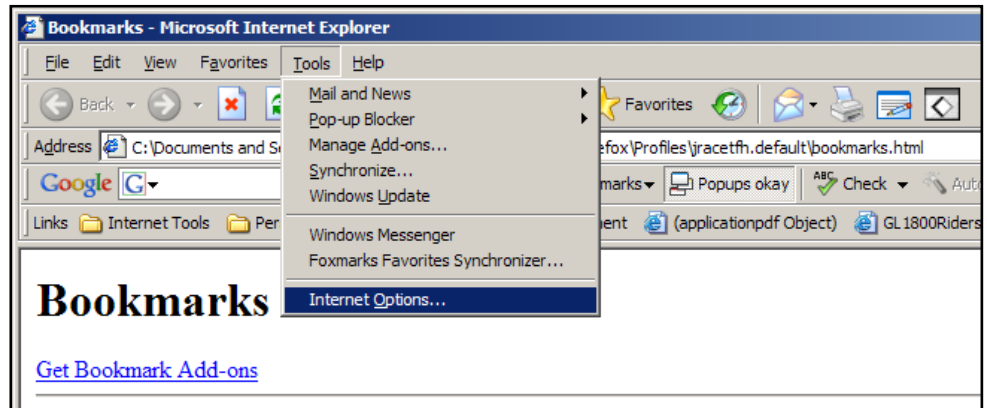
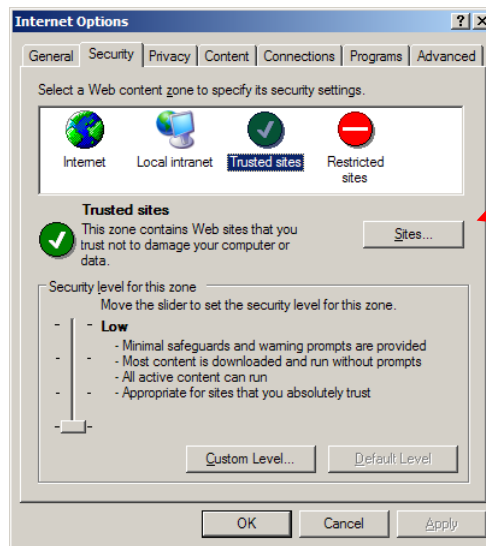


If you are receiving an error from the report server that starts “cannot find the specified file or folder...” try the steps below if you use Internet Explorer.

Select Tools/Internet Options from the browser window.



Click the Security tab and then the Sites button.

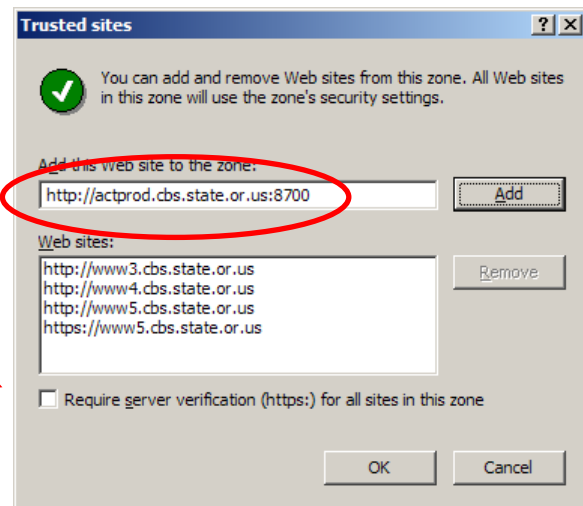


Be sure the check box at the bottom IS NOT checked. Add the report engine site to the trusted site list.

You may need to add all of the following to make this work properly:

- <http://actprod.cbs.state.or.us:8700>
- *.state.or.us

The last entry keeps you from having to list each of the State servers one at a time.



Click the OK button on all the window until you return back to your browser.